

重負荷
Heavy duty

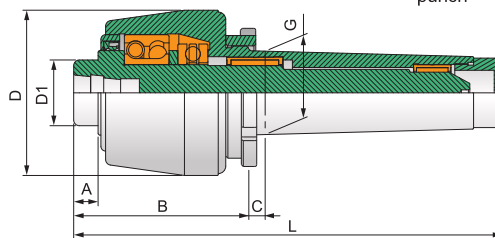
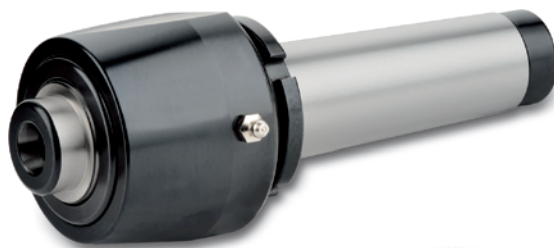
替換式系列
Interchangeable live centers series

➤ TSC-265 SERIES

尖部替換式高性能重負荷回轉頂針

INTERCHANGEABLE HEAVY DUTY HIGH PERFORMANCE LIVE CENTER

- ◎ **適用:** CNC車床、高速車床及其他機床。
Application CNC lathe and high speed lathe or other lathe.
- ◎ **用途:** 適用一般軸心強力車削加工。
Working Usage Applicable for ordinary strong turning process.
- ◎ **結構:** 採用雙列滾珠精密軸承，止推軸承及滾針軸承設計，採三個支撐點特殊設計製成。
Structure Combination of double row ball precise bearing and thrust bearing and needle bearing. With the design of three supporting points.
- ◎ **配件:** Y型扳手、65型大子、65型沖子
Accessories Y spanner and 65 type Tips and 65 type punch.
- ◎ **精準度:** 0.005以內
TIR Less than 0.005mm



規格 / Specification 單位/UNIT: mm

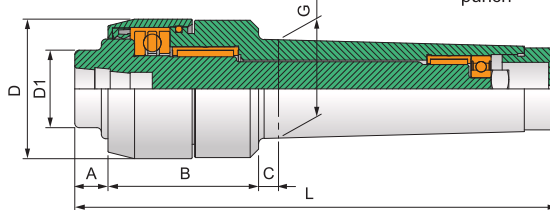
型式/外表尺寸 Model/Spec	A	B	C	D	D1	G	L	軸承最高轉數 Max. RPM	軸承徑向力 (載重) Max. radial load	軸承軸向力 (推力) Max. axial thrust force
TSC-265-3A	15	87	8	58	34.8	23.825(MT3)	174	6,000 rpm	1,450 kg	1,800 kg
TSC-265-4A	15	87	9	65	34.8	31.267(MT4)	195	6,000 rpm	2,250 kg	2,700 kg
TSC-265-5A	15	93	9	75	34.8	44.399(MT5)	228	6,000 rpm	3,620 kg	3,000 kg

➤ TSC-665 SERIES

尖部替換式強力回轉頂針

INTERCHANGEABLE HEAVY DUTY STRONG LIVE CENTER

- ◎ **適用:** CNC車床、高速車床及其他機床。
Application CNC lathe and high speed lathe or other lathe.
- ◎ **用途:** 適用高推力強力車削加工。
Working Usage Applicable for ordinary strong turning process.
- ◎ **結構:** 止推軸承加大推力設計，載重前後採用針狀軸承設計製成。
Structure Combination of thrust bearing with enhanced axial load design and needle bearing at front and rear place for radial load.
- ◎ **選配:** 65型大子、65型沖子
Accessories 65 type Tips and 65 type punch.
- ◎ **精準度:** 0.005以內
TIR Less than 0.005mm



規格 / Specification 單位/UNIT: mm

型式/外表尺寸 Model/Spec	A	B	C	D	D1	G	L	軸承最高轉數 Max. RPM	軸承徑向力 (載重) Max. radial load	軸承軸向力 (推力) Max. axial thrust force
TSC-665-3	12	69	8	58	34.8	23.825(MT3)	156	3,500 rpm	1,960 kg	1,750kg
TSC-665-4	15	83	9	63	34.8	31.267(MT4)	191	3,500 rpm	2,800 kg	2,150kg
TSC-665-5	15	83	9	63	34.8	44.399(MT5)	218	3,500 rpm	3,080 kg	2,150kg