

齒式三爪鋼殼夾頭

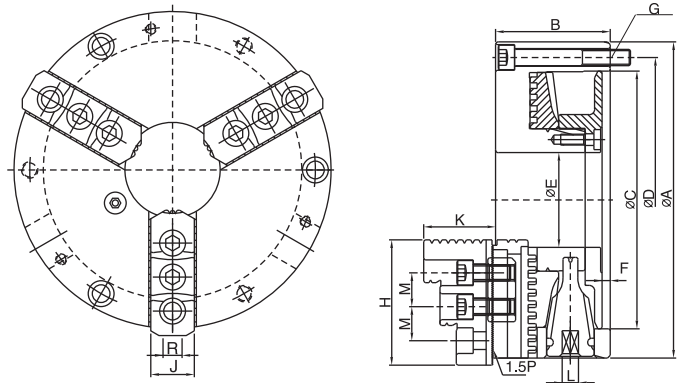
NT 3-JAW STEEL BODY CHUCKS

齒式鋼殼夾盤特色：

- ◎ 1.可替代修整油壓生爪成型盤。
- ◎ 2.爪仔可前後任意調整，加大夾持工件範圍。
- ◎ 3.生爪及硬爪與CNC車床油壓爪共用。
- ◎ 4.鋼殼結構於高速迴轉時安全性高，耐磨性強，使用壽命長。
- ◎ 5.轉動板手扭力較小操作順暢。

Steel body chucks:

- ◎ 1.Can be used as a " Forming plate " for machining soft jaws.
- ◎ 2.Hard jaws and soft jaws can be adjusted just like on a power Chuck to increase the gripping range.
- ◎ 3.Hard jaws as well as Soft jaws are interchangeable with those of power chucks.
- ◎ 4.Chuck Body is made of steel to enhance safety operations for high speed machining.
- ◎ 5.The Chuck Handle can be operated easily and smoothly.



特點配合圖示說明 / **ILLUSTRATE** :



硬爪與油壓夾盤硬爪共用

Hard jaws are interchangeable with those of power chucks.



生爪與油壓夾盤生爪共用

連結盤

Soft jaws are interchangeable with those of power chucks

Optional accessory: Mounting plate.

規格 / Specification

單位/UNIT:mm

型式 / 規格 MODEL/SPEC.	A	B	C	D	E	F	G	H	J	K	L
NT-07	193	78	155	172	58	5	3-M10x1.5P	78	28	46	11
NT-09	233	85	190	210	70	5.5	3-M12x1.75P	92	32	52	12
NT-10	273	91	230	250	89	5.5	3-M12x1.75P	101.5	37	56	12
NT-12	310	104	260	285	105	7	3-M12x1.75P	116	47	67	14

型式 / 規格 MODEL/SPEC.	M	R	最高轉速 Max. Speed r.p.m.(min ⁻¹)	把握範圍 Max.Gripping Diameter		淨重 Weight (kg)
				外徑把握 O.D.Clamping	內徑把握 I.D.Clamping	
NT-07	20	12	3200	ø8~ø235	ø66~ø235	13.1
NT-09	25	14	2800	ø11~ø280	ø85~ø280	21.2
NT-10	30	16	2400	ø12~ø330	ø92~ø330	30.5
NT-12	30	21	2100	ø15~ø370	ø104~ø370	46.1