

### 前端嵌入式塑鋼軟爪

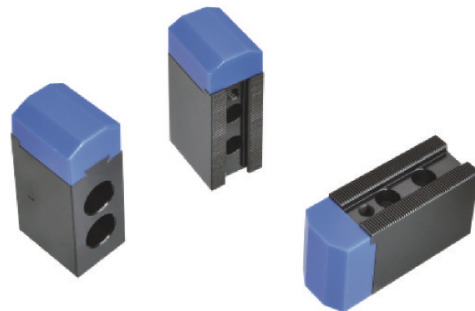
### POM HEAD SOFT JAWS FOR HYDRAULIC CHUCK

◎ 襯頭與油壓生爪採嵌入式緊配結合，多面拘束，可提升夾持工件的穩定性及保護工件表面。  
(此襯頭採固定式緊配結合，不做替換)

The POM/MC head is tight fit with steel parts, can't be changed, it can improve the gripping stability and protect the work piece surface.



▶ 尖型軟質油壓生爪 Pointed Type



▶ 標準軟質油壓生爪 Standard Type

規格/型號 Model	尺寸/Size (mm)					角度 Angle	單位/UNIT:mm 材質 Material	
	J1	J2	J3	B	t		MC尼龍/Nylon	POM塑鋼
SN-06	73	31	37	14	8	120	V	
SPOM-06	73	31	37	14	8	120		V
SN06P90	73	31	37	5	8	90	V	
SPOM06P90	73	31	37	5	8	90		V
SN-08	95	35	38	16	13	120	V	
SPOM-08	95	35	38	16	13	120		V
SN08P90	95	35	38	5	13	90	V	
SPOM08P90	95	35	38	5	13	90		V
SN-10	110	40	42	18	18	120	V	
SPOM-10	110	40	42	18	18	120		V
SN10P910	110	40	42	5	18	90	V	
SPOM10P90	110	40	42	5	18	90		V

注 (Remarks): 1.需訂做,可非標定制。  
it's made for customized order

2.軟質的材質可分為1.MC尼龍 2.POM塑鋼  
The available material is MC nylon and POM

