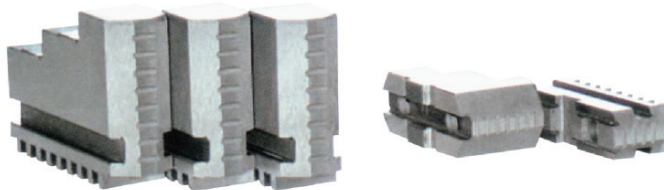


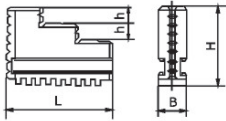
三爪自定心卡盤卡爪

HARD JAWS FOR SCROLL CHUCK



- ◎ 卡爪分為：整體爪，及各種分離爪。
- ◎ 可按用戶要求 提供各型硬卡爪。
- ◎ Hard jaws include one-piece jaws and two-piece jaws
- ◎ All kinds of hard jaws can be provided as the request of customers.

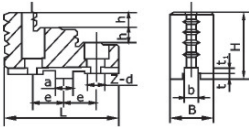
整體爪One-Piece Jaws



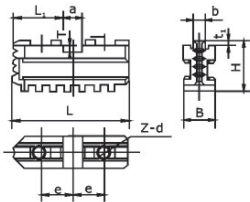
規格 Size	80	100	125	130	160	165	190	200	240	250	315 320 325 380
L	32	42	56	56	70	70	72	85	105	105	130
B	12	15	16	16	18.5	18.5	22	22	27	27	36
H	33	38	45	45	54	54	57	61	69	69	91
h	6.5	7	9	9	12	12	12	12	12	12	18

- ◎ 包括正爪、反爪各一副
- ◎ The chuck with one-piece jaws is provided with each set of internal and external ones.

A型、D型分離爪Two-Piece Jaws for Form A, D



規格 Size	160	200	250	315	325	380	400	500	630	
L	67	80	95	108	108	130	130	130	132	132
B	25	30	36	45	45	45	45	45	45	54
H	41	45	53	61	61	70	70	70	82	82
h	9	10.5	13.5	17.5	17.5	17	17	17	22	22
a	12.675	12.675	19.025	19.025	19.025	19.025	19.025	19.025	19.025	19.025
b	7.94	7.94	12.7	12.7	12.7	12.7	12.7	12.7	12.7	12.7
e	19	22.2	27	31.75	31.75	38.1	38.1	38.1	38.1	38.1
t	3	3	3	3	3	6	6	6	6	6
t ₁	4	4	4	4	4	4	4	4	4	4
z-d	2-11	2-11	2-13	2-13	2-13	2-18	2-18	2-18	2-22	2-22



規格 Size	160	200	250	315	325	380	400	500	630	
L	64	80	98	110	110	114	114	152	210	
L ₁	29	34.9	39.7	47.6	47.6	47.5	47.5	47.4	59	
B	20	22	27	36	36	36	36	45	50	
H	33	35	38	42	42	46	46	55	60	
a	12.675	12.675	19.025	19.025	19.025	19.025	19.025	19.025	19.025	
b	7.94	7.94	12.7	12.7	12.7	12.7	12.7	12.7	12.7	
e	19	22.2	27	31.75	31.75	38.1	38.1	38.1	38.1	
t	4	4.2	4.2	4.2	4.2	7	7	7	7	
t ₁	3	3	3	3	3	3	3	3	3	
z-d	2-M10	2-M10	2-M12	3-M12	3-M12	3-M16	3-M16	3-M16	4-M20	5-M20

- ◎ 包括頂爪和基爪兩部分。規格 為325、380的A型分離爪和所有規格的D型分離爪，基爪不帶夾 持弧。
- ◎ The jaws are composed of top jaws and master jaws. Master jaws for form A size 325,380 and form D without clamping arc.