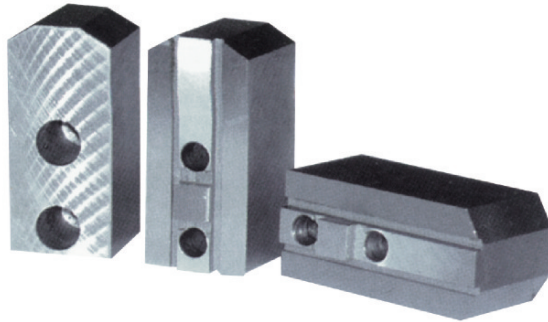
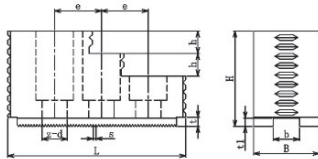
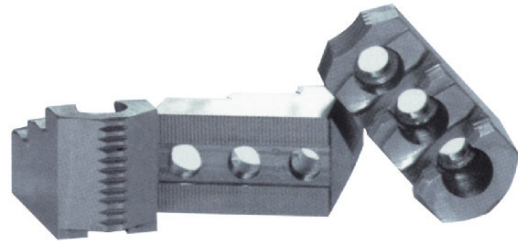


K52, K54, K55系列卡盘卡爪



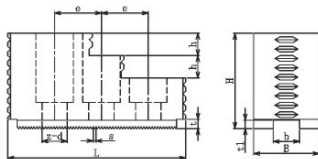
- ◎ Form A: Matched with hard top jaws with serrations.
- ◎ Form B: Matched with soft top jaws with cross tenon.

- ◎ A型：卡盘配带梳齿型硬卡爪。
- ◎ B型：卡盘配带十字键型软卡爪。



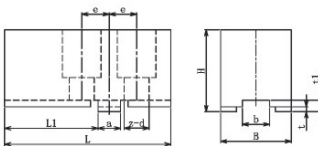
K52A

规格D Size	L	B	H	b	e	t	t ₁	s	h	z-d
160	70	35	42	13	20	4.5	4	1.5×90°	10	3-11
200	82	40	48	16	24	4.5	4	1.5×90°	11	3-13
250	95	45	50	17	28	4.5	4	1.5×90°	12	3-13
315	114	50	62	21	32	4.5	4		15	3-17
400	148	55	72	22	45	5.5	5		18	3-17



K54A、K55A、K55A-IV

规格D Size	L	B	H	b	e	t	t ₁	s	h	z-d
125	56	23	32	11	16	4	3.5	1.5×90°	7.5	3-9
160	68	30	42	13	20	4.5	4	1.5×90°	10	3-11
200	84	36	48	16	24	4.5	4	1.5×90°	11	3-13
250	90	40	50	17	28	4.5	4	1.5×90°	12	3-13
315	112	50	62	21	32	4.5	4		15	3-17



K52B、K55B

规格D Size	L	B	H	a	b	e	t	t ₁	L ₁	z-d
160	74	35	45	12	12	12.5	3	4	44	2-11
200	90	40	49	12	15	15	3	4	54.5	2-13
250	115	45	53	15	15	20	3	4	70.5	2-13
315	145	50	65	15	20	24	3	4	95	2-17
400	180	55	75	20	20	30	3	4	120	2-17