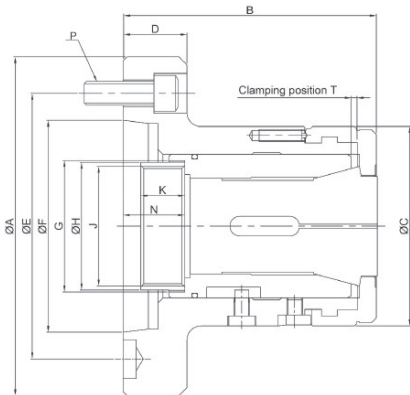


> LL-A SERIES

筒夾夾頭二

COLLET CHUCK 2



- ◎ 1. 筒夾夾頭可快速拆卸止檔蓋，適用於NC/CNC車床加工棒材。
- ◎ 2. 棒材能經由夾頭通孔進行送料作業。
- ◎ 3. 可依工作形狀及尺寸來選擇適合筒夾。
- ◎ 1. It is mainly suitable for NC/CNC lathe for machining bar. and the cover is disassemble and the collet can be changed quickly.
- ◎ 2. The bar can be fed in by bar feeder and through the collet chuck hole which can improve the processing efficiency.
- ◎ 3. Customers can choose a suitable spring collet according to the bar shape (round, square, hexagonal) and size.

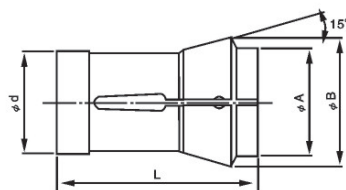
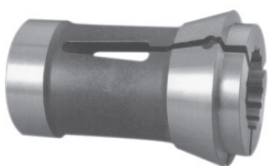
寸法 Size 型號 Model	適合主軸 Suitable for spindle	容許棒材直徑 Allowable bar diameter (mm)	套筒行程 Sleeve stroke (mm)	最大容許推力 Maximum allowable thrust KN(Kgf)	最大夾持力 Max clamping force KN(kgf)	最高轉速 Max r.p.m	重量(Kg) Weight	使用筒夾 Using collets
LL30A4	A2-4	30	5	20(2039)	44(4486)	7000	4.1	163E
LL36A5	A2-5	36	6	22.5(2300)	48.5(4950)	6000	6.3	171E
LL42A5	A2-5	42	7	25(2549)	55(5608)	6000	6.2	173E
LL42A6	A2-6	42	7	25(2549)	55(5608)	6000	8.2	173E
LL52A6	A2-6	52	7	30(3059)	65(6628)	5000	12.2	177E
LL60A6	A2-6	60	7	30(3059)	65(6628)	5000	13	185E
LL65A6	A2-6	67	7	30(3059)	65(6628)	5000	10.6	SAD-65
LL80A8	A2-8	80	7	35(3568)	73(7443)	4000	21	193E

寸法 Size 型號 Model	A	B	C	D	E	F	G	H	J max.	K	N	P	T
LL30A4	112	103.5	85	30	82.55	63.513	M50×P1.5	45	M40×P1.5	15	21.7	3-M10	2.3
LL36A5	135	130	100	27	104.78	82.563	M66×P1.5	60	M55×P2.0	17.5	30.9	4-M10	3.1
LL42A5	135	127	100	27	104.78	82.563	M66×P1.5	60	M55×P2.0	25	30.9	4-M10	3.1
LL42A6	170	127	100	32	133.35	106.375	M66×P1.5	66	M60×P2.0	22	30.9	4-M12	3.1
LL52A6	170	144	130	27	133.35	106.375	M90×P1.5	66.7	M60×P2.0	30	29.9	4-M12	3.1
LL60A6	170	145	130	27	133.35	106.375	M90×P1.5	80	M74×P2.0	30	29.9	4-M12	3.1
LL65A6	170	135	136	27	133.35	106.375	M95×P1.5	81	M75×P2.0	20	29.9	4-M12	3.1
LL80A8	220	170	156	35	171.45	139.719	M114×P2.0	99	M90×P2.0	27.5	32.4	6-M16	6.1

* 保留技術更改的權利，恕不另行通知 Subject to technology changes without prior information
 * 非標準需求可訂做 Non-standard requirements can be made

彈性筒夾

Collet



規格 / Specification

規格 Model	尺寸 Dim	A	B	d	L	Max Dia		
						○	⬡	□
161E	39	45	32	75	26	22	18	
163E	39	49	35	80	30	27	22	
171E	42	55	42	94	37	32	26	
173E	50	60	48	94	42	36	28	
177E	60	70	58	94	52	45	36	
185E	73	84	66	110	60	50	40	
SAD-65	79	93	75	100	67	58	47	
193E	92	107	90	130	80	69	56	

* 保留技術更改的權利，恕不另行通知 Subject to technology changes without prior information
 * 非標準需求可訂做 Non-standard requirements can be made